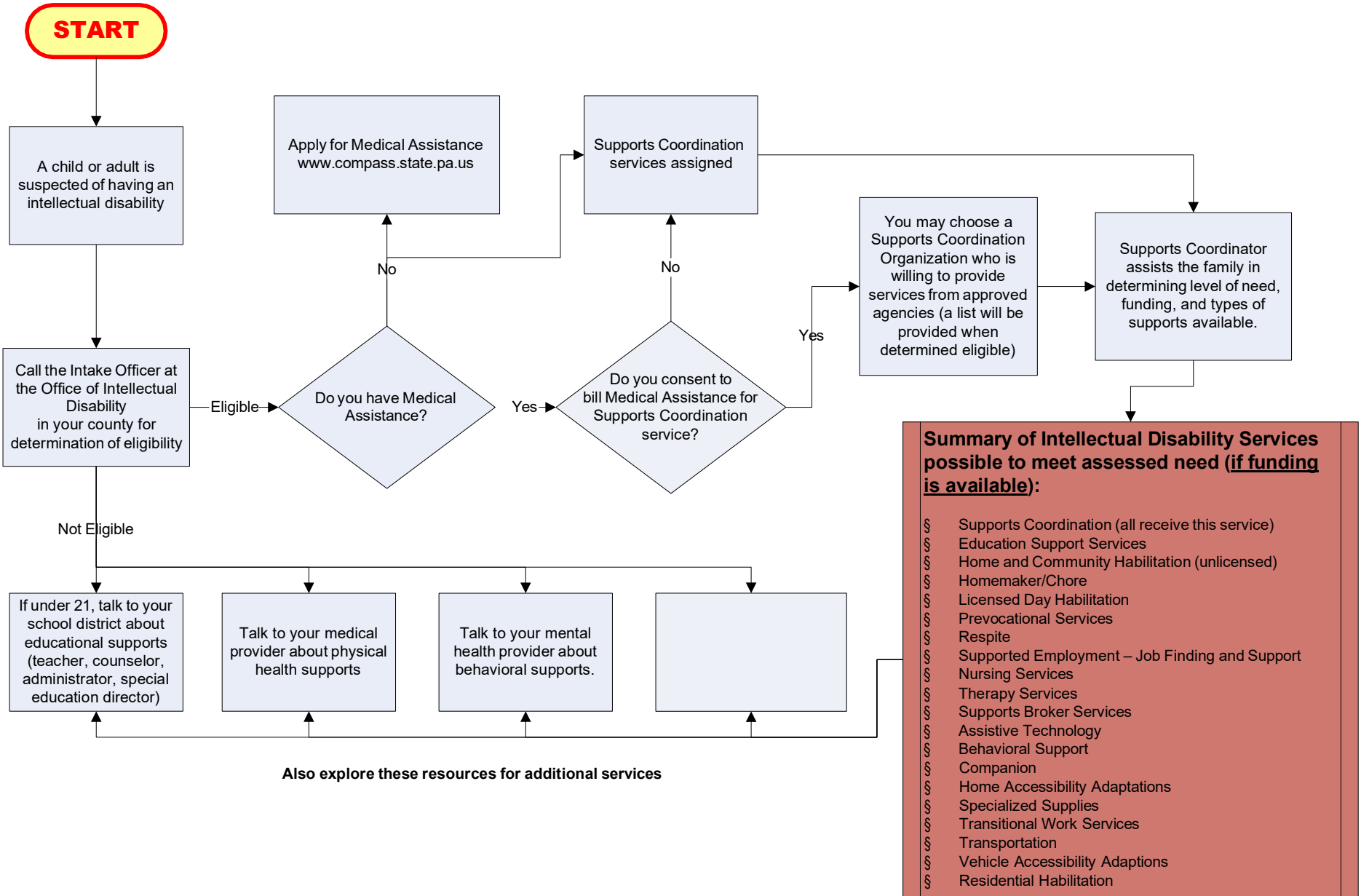


Berks County 610-236-0530
Chester County 610-344-6265
Delaware County 610-713-2451
Montgomery County 610-278-3642
Philadelphia 215-685-5900



Also explore these resources for additional services

Explanation of Support Services:

1. **Supports Coordination** — A Supports Coordinator assists with locating and coordinating supports and services which are then outlined in the Individual Support Plan. The Supports Coordinator also provides ongoing monitoring of services when they are delivered, as well as monitoring the general health and welfare of the person using the services.
2. **Family Driven Resources** — These are limited resources such as respite care, vehicle and/or home adaptations, and support needed to participate in integrated recreation. These may be paid directly to the vendor or as a reimbursement to the family.
3. **Companion** — Provides for supervision and basic care, as needed for individuals who are over the age of 18.
4. **Respite** — Overnight and/or interim respite may be available to provide periodic relief to the caregiver. This is not intended to be a regularly scheduled event and does not have annual service limits.
5. **Supported Employment** — Provides for all aspects of job finding as well as job training and follow-up once a person has exhausted funding through the Office of Vocational Rehabilitation.
6. **Pre-vocational Supports** — Facility-based training programs that assist with developing skills needed to seek employment in the community. This is intended to be an outcome-focused and short-term support.
7. **Licensed Day Program** — Facility and community-based program that provides supervision, training and support in general of self-care, communication, community participation and socialization.
8. **In Home Community Supports**— A face-to-face mentoring and support services, IHCS assists participants acquire, maintain and improve self-help, domestic, socialization and adaptive skills necessary to reside successfully in home and community-based settings.
9. **Residential Supports** — Provider operated residential homes that are needed to protect the health and welfare of the residents while assisting them in acquiring, retaining and improving self-help, socialization and adaptive skills necessary to reside successfully in home and community-based settings. This service includes licensed, unlicensed and Life Sharing options.
10. **Behavior Support** — This service offers functional assessment and development of strategies to support the participant. Family and staff/caregiver training is also provided.
11. **Home Accessibility/ Adaptation** — Modifications to the private home of the participant, which are necessary to ensure his or her health, security, and accessibility, or which enable the participant to function with greater independence in the home.
12. **Vehicle Adaptions** — These are modifications to the individual or family vehicle that is used for the individual's primary means of transportation.

- 14. 3. Assistive Technology** — This technology includes any item, piece of equipment or product system used to increase, maintain or improve a participant's functioning. Assistive technology devices must be recommended by an independent evaluation of the participant's assistive technology needs.
- 15. Therapy Services** — This includes occupational, speech, physical, vision and mobility therapy, and they must be medically needed to assist participants in the acquisition, retention, or improvement of skills necessary for the participant to live and work in the community.
- 16. Nursing Services** — Diagnosing and treating human responses to actual or potential health problems through such services as case finding, health teaching, health counseling, providing care supportive to, or restorative of, life and wellbeing. Medical regimens are executed as prescribed.